

Outdoor Units



2.5 HP - 3.0 HP



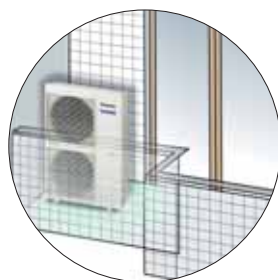
4.0 HP - 6.0 HP

Flexible Installation in Smaller Spaces

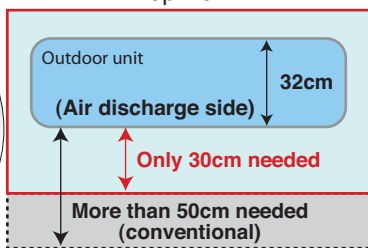
A variety of improvements has reduced installation time and space.

• Space-Saving Outdoor Unit

By improving the fan, we were able to make the outdoor unit small enough to fit in spaces too tight for conventional units.



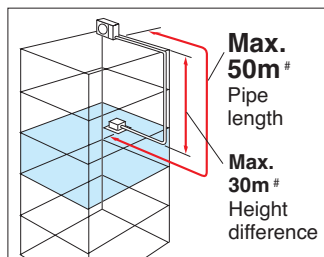
Top view



• 50m Long Piping

Piping can be extended up to 30 metres without additional gas charging, and up to 50 meters with additional gas charging.

By giving you more flexibility in positioning the outdoor unit, this gives you a wider range of installation options.



Allowable Pipe Length

[#] Additional gas is required.

	2.0HP	2.5-3.0HP	4.0HP	5.0-6.0HP
Max. Length [#]	30 m	50 m	50 m	50 m
Max. Chargeless Length	20 m	30 m	30 m	30 m
Max. Height Difference [#]	20 m	30 m ^{*1} 20 m ^{*2}	30 m ^{*1} 20 m ^{*2}	30 m ^{*1} 20 m ^{*2}

^{*1} When installing the outdoor unit at a higher position than the indoor unit.
^{*2} When installing the outdoor unit at a lower position than the indoor unit.

Quiet, Efficient Design

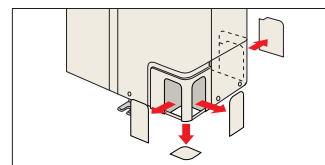
A host of silencing technologies achieve super-quiet operation. We've also improved operating efficiency and reduced energy consumption.



Noise-Suppressing Winglet Fan

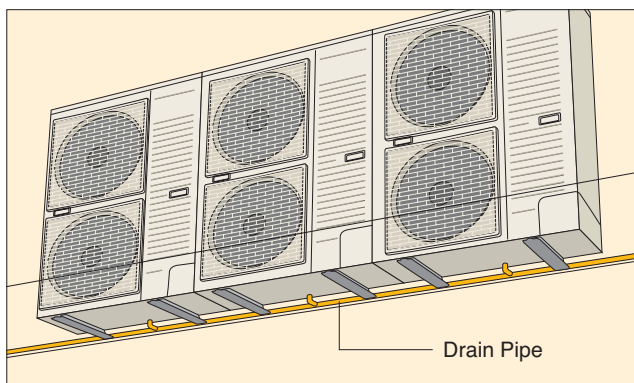
• Flexible 4-Way Piping

Piping can be routed in any of four directions.



• Centralised Drain Method

The drain outlets can be gathered into a single drain pipe even when multiple outdoor units are installed to a wall.



• Side-by-Side Continuous Installation

Even outdoor units with different capacities can be installed side by side in an efficient, orderly layout. To make this possible, we have positioned the service port in the front and given all models the same depth.

Low Ambient Cooling Operation

The unit can be used for cooling even when the outdoor temperature is extremely low.

This is ideal for locations that require cooling even in winter.

• Regular cooling conditions:

<Inverter> -5°C* to 43°C (outdoor temperature)

* However, cooling operation at -15°C <Inverter> / -10°C <Non-Inverter> is possible in non-residential computer rooms, etc., where the temperature is not less than 21°C and humidity is not more than 45%.

• Regular heating conditions:

<Inverter> -20°C to 24°C (outdoor temperature)